

Asher Stackable Aluminum Banquet Chair

SKU: 2062-AL-BQT



Experience the outstanding seating comfort provided by the Asher Event Chair.

Meticulously designed to effortlessly blend durability and elegance, this chair highlights a sturdy aluminum frame for long-lasting performance. What's more, its **stackable** design and **glide feature** simplify both storage and arrangement, making it a versatile and practical choice for any event setting.

PRODUCT FEATURES

- 1 Stacks 10 High
- 2 Nickel Plated Swivel Glides
- 3 10 Year Warranty
- 4 Cal 117 Fire Safety Rating
- 5 Fully Welded 12 Gauge Aluminum Frame



PRODUCT SPECIFICATIONS

Asher Banquet Chair Specifications

Overall Height	36.5 in
Overall Width	18.5 in
Overall Depth	24 in
Seat Height	18 in
Seat Width	15.5 in
Seat Depth	16 in
Seat Foam Thickness	2.5 in
Weight	14 lb
Weight Capacity	400 pounds
Frame Material	Aluminum
COM Seat Total	0.4 yards
COM Back Total	0.7 yards

Asher Customization

CRAFTED FOR UNIQUE BRANDS

Upholstery Options

Visit our [Upholstery Collection](#) page to search through thousands of upholstery options.

Our company offers the option of COM (Customer's Own Material) in our chair production, enabling clients to select their own materials to create chairs that perfectly align with their unique preferences

Chair Frame Finishes



Solid Black



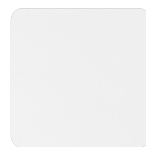
Texture Black



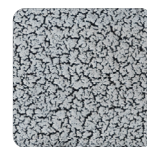
Gunmetal



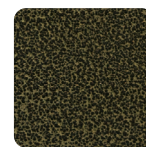
Metallic Silver



White



Silver Vein



Gold Vein



Copper Vein



Metallic Brown



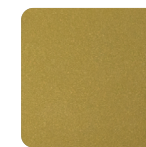
Copper Sparkle



Walnut



Bronze Sparkle



Metallic Gold



Cream

Add-Ons



Ganging mechanism

Upgrade your chairs with our practical ganging mechanism. Seamlessly link one chair to another, providing stability and alignment for events and gatherings.



Webbed seating

Elevate your banquet chairs with the addition of webbed seating, designed for enhanced comfort.