

Elio Stackable Aluminum Banquet Chair

SKU: 3172-AL-BQT

Experience Excellence with Seating Expert,
Your Hospitality Partner of Choice.

Introducing the Elio Banquet Chair, where durability and sophistication seamlessly unite.

Crafted with a sturdy aluminum frame, this chair ensures lasting performance. Its ergonomic design guarantees unparalleled comfort. Plus, equipped with **glides**, it effortlessly complements any setting while elevating your event experience.



PRODUCT SPECIFICATIONS

Elio Banquet Chair Specifications

Overall Height	36 in
Overall Width	20 in
Overall Depth	24.5 in
Seat Height	18 in
Seat Width	18.5 in
Seat Depth	18.5 in
Seat Foam Thickness	2.5 in
Weight	12.5 lb
Weight Capacity	400 pounds
Frame Material	Aluminum
COM Seat Total	0.4 yards
COM Back Total	0.45 yards

PRODUCT FEATURES

- 1 Nickel Plated Swivel Glides
- 2 10 Year Warranty
- 3 Cal 117 Fire Safety Rating
- 4 Fully Welded 12 Gauge Aluminum Frame
- 5 Stacks 4 High

Elio Customization

CRAFTED FOR UNIQUE BRANDS

Upholstery Options

Visit our [Upholstery Collection](#) page to search through thousands of upholstery options.

Our company offers the option of COM (Customer's Own Material) in our chair production, enabling clients to select their own materials to create chairs that perfectly align with their unique preferences

Chair Frame Finishes



Solid Black



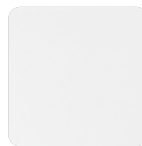
Texture Black



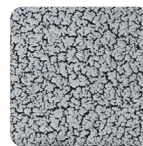
Gunmetal



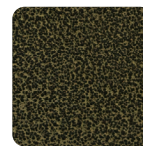
Metallic Silver



White



Silver Vein



Gold Vein



Copper Vein



Metallic Brown



Copper Sparkle



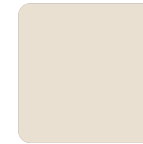
Walnut



Bronze Sparkle



Metallic Gold



Cream

Add-Ons



Ganging mechanism

Upgrade your chairs with our practical ganging mechanism. Seamlessly link one chair to another, providing stability and alignment for events and gatherings.



Webbed seating

Elevate your banquet chairs with the addition of webbed seating, designed for enhanced comfort.