

Ella Stackable Aluminum Banquet Chair

SKU: 4062-AL-BQT



Experience the excellence of event seating with the Ella Banquet Chair.

Boasting durability and sophistication, it features a robust aluminum frame for enduring quality. The **flex-back** design offers unparalleled comfort, elevating your guests' experience. Plus, its **stackable** design and glides make storage and arrangement effortless, making it the ideal choice for any event setting.

PRODUCT SPECIFICATIONS

Ella Banquet Chair Specifications

Overall Height	34.5 in
Overall Width	18.5 in
Overall Depth	24 in
Seat Height	18 in
Seat Width	15.5 in
Seat Depth	16.5 in
Seat Foam Thickness	2.5 in
Weight	18 lbs
Weight Capacity	400 pounds
Frame Material	Aluminum
COM Seat Total	0.4 yards
COM Back Total	0.7 yards

PRODUCT FEATURES

- 1 Stacks 10 High
- 2 Nickel Plated Swivel Glides
- 3 10 Year Warranty
- 4 Cal 117 Fire Safety Rating
- 5 Fully Welded 12 Gauge Aluminum Frame

Ella Customization

CRAFTED FOR UNIQUE BRANDS

Upholstery Options

Visit our [Upholstery Collection](#) page to search through thousands of upholstery options.

Our company offers the option of COM (Customer's Own Material) in our chair production, enabling clients to select their own materials to create chairs that perfectly align with their unique preferences

Chair Frame Finishes



Solid Black



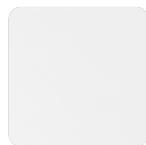
Texture Black



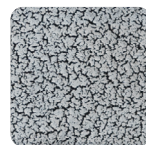
Gunmetal



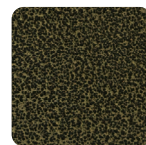
Metallic Silver



White



Silver Vein



Gold Vein



Copper Vein



Metallic Brown



Copper Sparkle



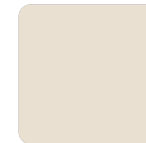
Walnut



Bronze Sparkle



Metallic Gold



Cream

Add-Ons



Ganging mechanism

Upgrade your chairs with our practical ganging mechanism. Seamlessly link one chair to another, providing stability and alignment for events and gatherings.



Webbed seating

Elevate your banquet chairs with the addition of webbed seating, designed for enhanced comfort.