

# Everett Stackable Steel Banquet Chair

SKU: 2042-ST-BQT



Discover the exceptional seating comfort offered by the Everett Steel Banquet Chair.

Thoughtfully designed to seamlessly combine durability and elegance, this chair showcases a robust steel frame that ensures enduring performance. What sets it apart even more is its **stackable** design and **glide feature**, which simplify both storage and arrangement, making it a versatile and pragmatic choice.

## PRODUCT FEATURES

- 1 Stacks 10 High
- 2 Nickel Plated Swivel Glides
- 3 10 Year Warranty
- 4 Cal 117 Fire Safety Rating
- 5 Fully Welded 18 Gauge Steel Frame

## PRODUCT SPECIFICATIONS

Everett Banquet Chair Specifications	
Overall Height	38 in
Overall Width	17.5 in
Overall Depth	23 in
Seat Height	18 in
Seat Width	15 in
Seat Depth	15 in
Seat Foam Thickness	2.5 in
Weight	12 lb
Weight Capacity	500 pounds
Frame Material	Steel
COM Seat Total	0.35 yards
COM Back Total	0.45 yards

## Everett Customization

CRAFTED FOR UNIQUE BRANDS

### Upholstery Options

Visit our [Upholstery Collection](#) page to search through thousands of upholstery options.

Our company offers the option of COM (Customer's Own Material) in our chair production, enabling clients to select their own materials to create chairs that perfectly align with their unique preferences

### Chair Frame Finishes



Solid Black



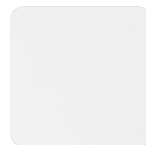
Texture Black



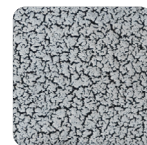
Gunmetal



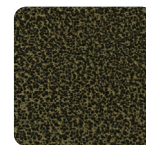
Metallic Silver



White



Silver Vein



Gold Vein



Copper Vein



Metallic Brown



Copper Sparkle



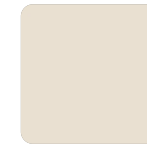
Walnut



Bronze Sparkle



Metallic Gold



Cream

### Add-Ons



#### Ganging mechanism

Upgrade your chairs with our practical ganging mechanism. Seamlessly link one chair to another, providing stability and alignment for events and gatherings.



#### Webbed seating

Elevate your banquet chairs with the addition of webbed seating, designed for enhanced comfort.