

Tatum Stackable Aluminum Banquet Chair

SKU: 3052-AL-BQT



PRODUCT SPECIFICATIONS

Tatum Banquet Chair Specifications	
Overall Height	36.5 in
Overall Width	16.5 in
Overall Depth	23.5 in
Seat Height	18 in
Seat Width	16 in
Seat Depth	16 in
Seat Foam Thickness	2.5 in
Weight	16 lb
Weight Capacity	400 pounds
Frame Material	Aluminum
COM Seat Total	0.4 yards
COM Back Total	0.7 yards

Explore the remarkable seating experience provided by the Tatum Event Chair.

Crafted to blend durability and elegance seamlessly, this chair features a sturdy aluminum frame that guarantees long-lasting performance. The innovative **flex-back** design promises unmatched comfort, enhancing your guests' overall event enjoyment. Furthermore, its **stackable** configuration and **glides** simplify both storage and arrangement.

PRODUCT FEATURES

- 1 Stacks 10 High
- 2 Nickel plated Swivel Glides
- 3 10 Year Warranty
- 4 Cal 117 Fire Safety Rating
- 5 Fully Welded 12 Gauge Aluminum Frame

Tatum Customization

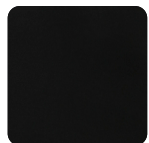
CRAFTED FOR UNIQUE BRANDS

Upholstery Options

Visit our [Upholstery Collection](#) page to search through thousands of upholstery options.

Our company offers the option of COM (Customer's Own Material) in our chair production, enabling clients to select their own materials to create chairs that perfectly align with their unique preferences

Chair Frame Finishes



Solid Black



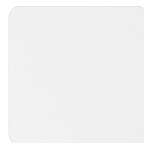
Texture Black



Gunmetal



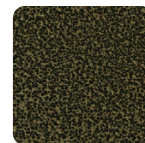
Metallic Silver



White



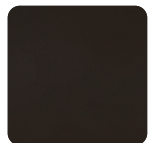
Silver Vein



Gold Vein



Copper Vein



Metallic Brown



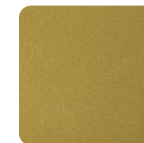
Copper Sparkle



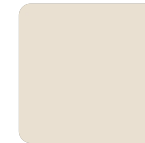
Walnut



Bronze Sparkle



Metallic Gold



Cream

Add-Ons



Ganging mechanism

Upgrade your chairs with our practical ganging mechanism. Seamlessly link one chair to another, providing stability and alignment for events and gatherings.



Webbed seating

Elevate your banquet chairs with the addition of webbed seating, designed for enhanced comfort.